

YEAR 2015

COVERAGE (B) STATION 6210

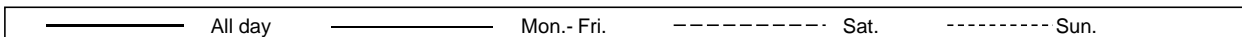
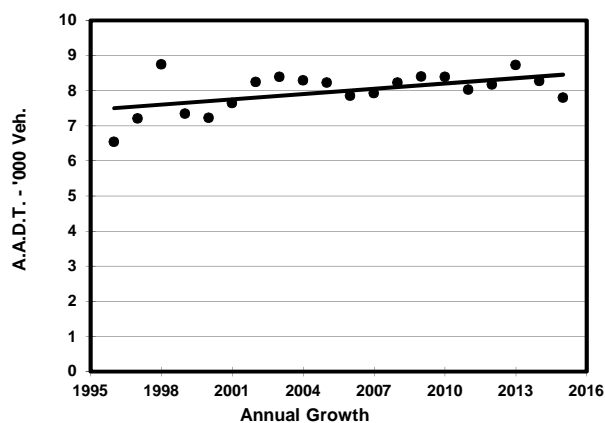
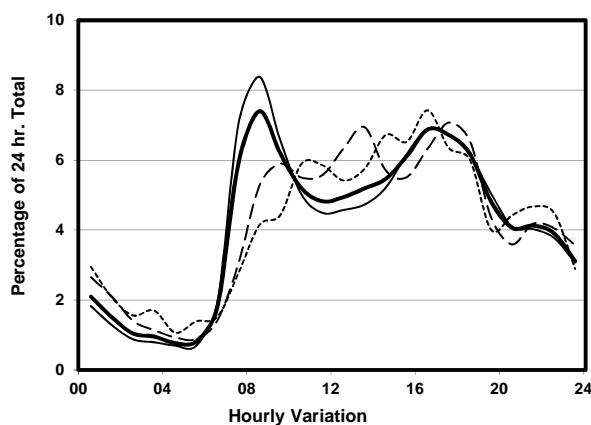
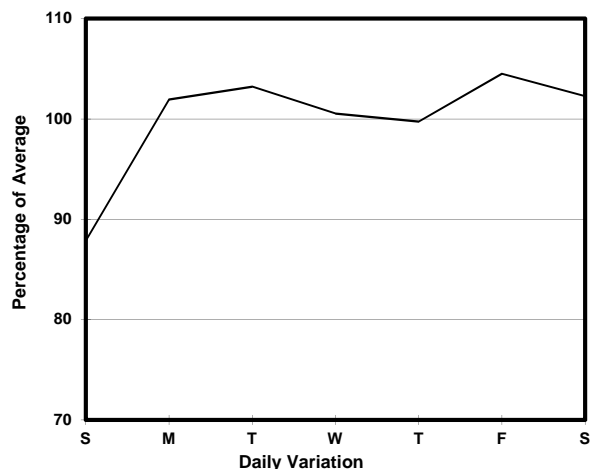
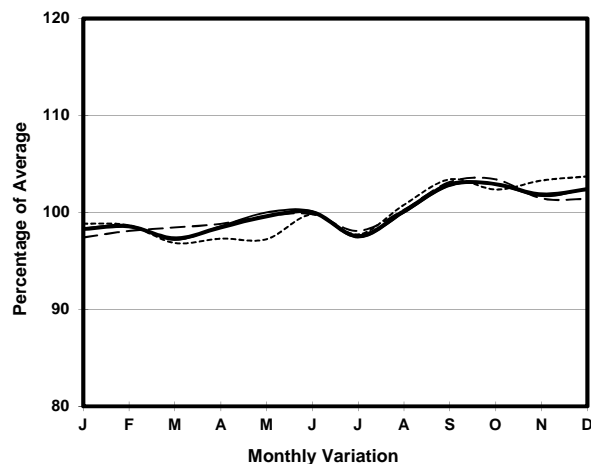
ROAD NETWORK MAJOR

ROAD TYPE RURAL ROAD

LINK TAI PO RD - MA LIU SHUI (from ENTRANCE TO CHUNG CHI COLLEGE, CUHK to YUEN CHAU TSAI INT)



## 1. TRAFFIC FLOW VARIATION AND GROWTH



## 2. TRAFFIC CHARACTERISTICS (BY DIRECTION)

| Parameter                            | All - Day | Mon. - Fri. | Sat.      | Sun.      |
|--------------------------------------|-----------|-------------|-----------|-----------|
| <b>SOUTH BOUND</b>                   |           |             |           |           |
| A.A.D.T.                             | 3760      | 3880        | 3780      | 3280      |
| R 12 / 24 - %                        | 74.2      | 75.3        | 71.7      | 70.7      |
| R 16 / 24 - %                        | 87.2      | 88          | 85.3      | 85        |
| AM Peak Hour                         | 0800-0900 | 0800-0900   | 0900-1000 | 0900-1000 |
| One-way flow at AM peak hour         | 340       | 410         | 260       | 180       |
| T - % (AM)                           | -         | 7.7         | -         | -         |
| PM Peak Hour                         | 1600-1700 | 1600-1700   | 1800-1900 | 1600-1700 |
| One-way flow at PM peak hour         | 240       | 250         | 240       | 230       |
| T - % (PM)                           | -         | 5.6         | -         | -         |
| Prop.of commercial vehicles - 16 hr. | -         | 5.9         | -         | -         |
| <b>NORTH BOUND</b>                   |           |             |           |           |
| A.A.D.T.                             | 4030      | 4120        | 4240      | 3600      |
| R 12 / 24 - %                        | 68        | 68.8        | 68        | 64.2      |
| R 16 / 24 - %                        | 88.5      | 89.7        | 86.5      | 84.8      |
| AM Peak Hour                         | 0800-0900 | 0800-0900   | 0900-1000 | 0800-0900 |
| One-way flow at AM peak hour         | 240       | 270         | 210       | 130       |
| T - % (AM)                           | -         | 11.1        | -         | -         |
| PM Peak Hour                         | 1700-1800 | 1700-1800   | 1700-1800 | 1600-1700 |
| One-way flow at PM peak hour         | 300       | 320         | 330       | 280       |
| T - % (PM)                           | -         | 5.3         | -         | -         |
| Prop.of commercial vehicles - 16 hr. | -         | 6.9         | -         | -         |

## 3. OTHER INFORMATION AND COMMENT

**4. Vehicle classification and occupancy - Monday to Friday**

| Time                   |     | Class of vehicle |         |      |         |      |            |       |         |         |      |
|------------------------|-----|------------------|---------|------|---------|------|------------|-------|---------|---------|------|
|                        |     | Motor            | Private | Taxi | Private | PLB  | Goods veh. |       | Non     | Fr. Bus |      |
|                        |     | Cycle            | Car     |      | LB      |      | Light      | M & H | Fr. Bus | SD      | DD   |
| 0700-0800              | Pro | 2.0              | 65.5    | 16.1 | 2.0     | 6.0  | 3.0        | 0.0   | 1.0     | 2.5     | 1.8  |
|                        | Ocp | 1.0              | 1.8     | 1.9  | 10.5    | 12.2 | 1.0        | 0.0   | 3.0     | 25.4    | 38.9 |
| 0800-0900<br>Peak hour | Pro | 1.3              | 61.3    | 14.5 | 0.0     | 4.6  | 9.2        | 4.0   | 2.0     | 1.5     | 1.6  |
|                        | Ocp | 1.5              | 1.7     | 1.3  | 0.0     | 12.9 | 1.6        | 1.2   | 9.0     | 17.0    | 52.3 |
| 0900-1000              | Pro | 2.7              | 49.9    | 19.1 | 2.1     | 5.5  | 12.3       | 4.8   | 0.7     | 1.2     | 1.7  |
|                        | Ocp | 1.0              | 1.3     | 1.3  | 2.3     | 8.8  | 1.9        | 1.1   | 1.0     | 21.7    | 19.3 |
| 1000-1100              | Pro | 2.7              | 49.0    | 7.1  | 0.9     | 8.0  | 24.9       | 2.7   | 0.0     | 2.0     | 2.7  |
|                        | Ocp | 1.0              | 1.3     | 1.1  | 3.0     | 8.0  | 1.6        | 1.3   | 0.0     | 14.7    | 14.5 |
| 1100-1200              | Pro | 8.1              | 39.2    | 14.9 | 0.0     | 9.5  | 21.6       | 0.0   | 1.4     | 2.7     | 2.7  |
|                        | Ocp | 1.0              | 1.3     | 1.3  | 0.0     | 6.9  | 1.3        | 0.0   | 1.0     | 17.1    | 29.3 |
| 1200-1300              | Pro | 2.2              | 57.6    | 7.6  | 3.3     | 7.6  | 15.2       | 1.1   | 1.1     | 1.9     | 2.4  |
|                        | Ocp | 1.0              | 1.3     | 1.4  | 8.3     | 6.0  | 1.6        | 1.0   | 6.0     | 12.3    | 21.6 |
| 1300-1400              | Pro | 3.2              | 48.8    | 15.9 | 0.0     | 8.5  | 13.8       | 5.3   | 0.0     | 2.1     | 2.4  |
|                        | Ocp | 1.0              | 1.8     | 2.1  | 0.0     | 7.6  | 1.8        | 1.4   | 0.0     | 17.4    | 26.2 |
| 1400-1500              | Pro | 1.0              | 53.7    | 16.2 | 0.0     | 7.1  | 16.2       | 1.0   | 1.0     | 2.0     | 1.8  |
|                        | Ocp | 1.0              | 1.4     | 1.4  | 0.0     | 6.4  | 1.8        | 1.0   | 1.0     | 14.1    | 31.1 |
| 1500-1600              | Pro | 3.5              | 52.1    | 20.0 | 2.6     | 4.3  | 10.4       | 0.9   | 2.6     | 1.7     | 2.0  |
|                        | Ocp | 1.0              | 1.5     | 1.3  | 7.3     | 8.6  | 1.3        | 1.0   | 10.7    | 23.6    | 36.3 |
| 1600-1700              | Pro | 0.0              | 52.1    | 23.2 | 3.2     | 5.6  | 9.6        | 0.0   | 2.4     | 1.6     | 2.2  |
|                        | Ocp | 0.0              | 1.6     | 1.1  | 3.8     | 12.9 | 1.4        | 0.0   | 9.3     | 19.5    | 29.5 |
| 1700-1800              | Pro | 5.2              | 51.5    | 17.5 | 5.2     | 8.7  | 6.1        | 0.0   | 2.6     | 1.3     | 1.7  |
|                        | Ocp | 1.0              | 1.6     | 1.8  | 6.2     | 12.3 | 1.3        | 0.0   | 16.0    | 32.0    | 52.1 |
| 1800-1900              | Pro | 3.3              | 71.0    | 5.7  | 0.0     | 11.4 | 4.1        | 0.0   | 0.8     | 1.6     | 2.0  |
|                        | Ocp | 1.3              | 1.5     | 1.4  | 0.0     | 11.9 | 1.2        | 0.0   | 1.0     | 30.3    | 68.8 |
| 1900-2000              | Pro | 0.9              | 65.4    | 12.3 | 0.0     | 15.2 | 1.9        | 0.0   | 0.0     | 2.1     | 2.1  |
|                        | Ocp | 1.0              | 1.6     | 2.2  | 0.0     | 8.7  | 1.5        | 0.0   | 0.0     | 18.2    | 32.9 |
| 2000-2100              | Pro | 3.1              | 64.2    | 11.4 | 0.0     | 13.5 | 3.1        | 0.0   | 0.0     | 2.6     | 2.1  |
|                        | Ocp | 1.0              | 1.4     | 1.4  | 0.0     | 7.5  | 1.3        | 0.0   | 0.0     | 13.6    | 34.0 |
| 2100-2200              | Pro | 7.5              | 54.7    | 17.4 | 0.0     | 13.7 | 2.5        | 0.0   | 0.0     | 1.9     | 2.5  |
|                        | Ocp | 1.0              | 1.5     | 1.6  | 0.0     | 11.8 | 1.5        | 0.0   | 0.0     | 14.2    | 24.8 |
| 2200-2300              | Pro | 8.5              | 53.7    | 15.9 | 0.0     | 18.3 | 0.0        | 0.0   | 0.0     | 1.2     | 2.4  |
|                        | Ocp | 1.1              | 1.5     | 1.2  | 0.0     | 6.7  | 0.0        | 0.0   | 0.0     | 8.8     | 21.8 |
| 16 hours               | Pro | 3.2              | 56.0    | 14.8 | 1.3     | 8.8  | 9.7        | 1.4   | 1.1     | 1.8     | 2.1  |
|                        | Ocp | 1.1              | 1.5     | 1.5  | 5.9     | 9.3  | 1.6        | 1.2   | 8.2     | 18.9    | 33.2 |

**Legend**

**Pro.** Proportion of vehicles in % (Sum may not add up to 100% due to figure rounding)\*

**Ocp.** Average occupancy of vehicles including both driver and passengers\*

**M&H** Medium and Heavy

\* All traffic data are collected from combined bounds except for one way traffic